

A photograph of two women walking along a modern building's exterior. The building features horizontal wood siding, which is the focus of the advertisement. The woman on the left is wearing a white shirt and dark pants, carrying a laptop and a jacket. The woman on the right is wearing a grey sweater and light-colored pants, carrying a blue folder. They are both smiling and looking at each other. The background shows a glass-walled building and some greenery.

PURA<sup>®</sup> NFC

EVERY FACADE,  
STUNNING FOR DECADES

HIGH-PERFORMANCE EXTERIOR SIDING

TRESPA<sup>®</sup>









**PURA<sup>®</sup> NFC**

# The durable siding

Pura<sup>®</sup> NFC clads buildings in enduring elegance – maintaining its beauty and smooth surface in the face of the elements. Its rich hues are sealed in, so its color remains over years and seasons.

This premium siding is designed to be durable, low maintenance and easily installed.



High impact  
and scratch  
resistance



Hassle-free  
maintenance



Once installed,  
never redone



High performance  
exterior siding

**PURA<sup>®</sup> NFC**  
PU02 Classic Oak







## PURA® NFC NFPA 285 COMPLIANT ASSEMBLY

Pura® NFC is a high-pressure decorative exterior-grade compact laminate. NFPA 285 may apply to its use in specific types of buildings. If so, facades must be designed and installed in compliance with the tested wall assembly. Please refer to our technical website: [www.trespa.info](http://www.trespa.info) for data sheets and reports of products. To ascertain that the users of its products are aware, and seek to build compliant facades, Trespa introduced an order questionnaire to be completed.





# High impact and scratch resistance

Each Pura® NFC product undergoes rigorous laboratory testing, exposing it to harsh climatic elements to ensure it retains its vibrancy and finish. Designed for enduring performance and aesthetic appeal, the Pura® NFC system represents a long-term investment in quality and durability.

## Pura® NFC is highly resistant to:

- Impacts
- Scratches
- Wear and tear
- UV radiation
- Harsh weather conditions
- Moisture

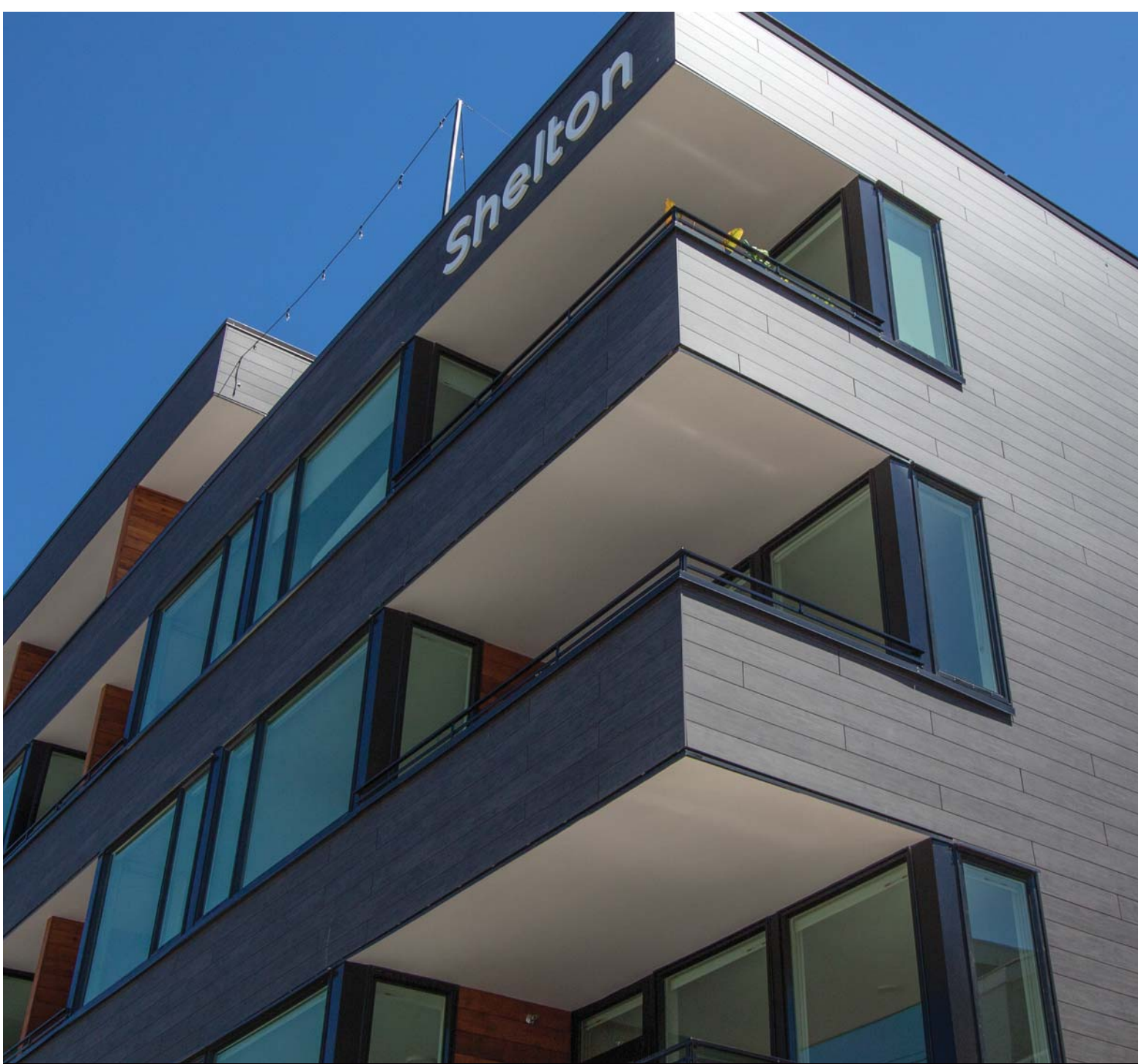
### **PURA® NFC**

PU08 Romantic Walnut

PU24 Mystic Cedar







No painting or  
refinishing needed

---





# Hassle-free maintenance

Pura® NFC isn't just beautiful; its durability means you do not have to worry about it. The closed surface prevents dirt from building up, making cleaning easy and infrequent. There is no painting or refinishing needed. Contaminants like soot, salt, graffiti and permanent markers are easy to remove.

Buildings keep their vibrant beauty year after year. It's yet another way that buildings with Pura® NFC façades maintain their original style long after the architects and installers have left. Pura® NFC is an investment in lasting architectural appeal.



**PURA® NFC**  
PU22 Slate Ebony



The closed surface created by Trespa's proprietary Electron Beam Curing (EBC) technology makes it hard for dirt to build up, locking it out and colors in.









**PURA<sup>®</sup> NFC**



## Natural fiber core

The NFC in Pura<sup>®</sup> NFC stands for natural fiber core. The high-pressure laminate incorporates a minimum 58% bio-based contents. The natural fibers used, go through an advanced in-house developed manufacturing process, to turn them into high performance panels. All Pura<sup>®</sup> NFC products are certified according to the PEFC<sup>™</sup> standard.


---

**PURA<sup>®</sup> NFC**


PU17 Aged Ash  
PU24 Mystic Cedar  
PU28 Siberian Larch







**PU28**  
Siberian Larch



**PU24**  
Mystic Cedar




**PU02**  
Classic Oak



**PU17**  
Aged Ash



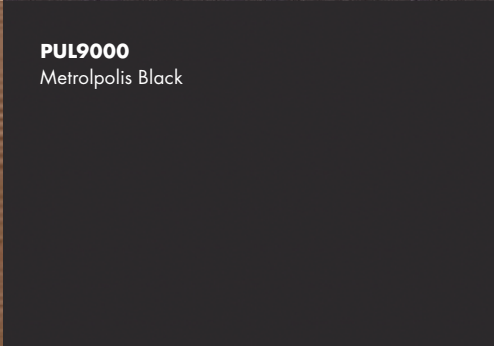
**PU14**  
French Walnut



**PU22**  
Slate Ebony



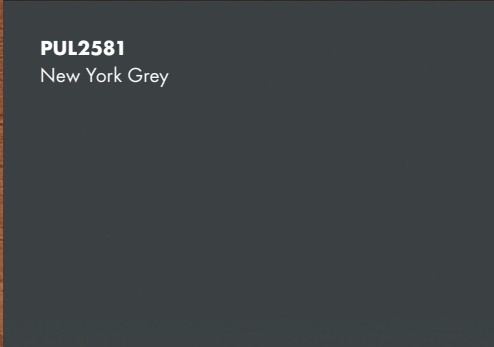
**PU31**  
Western Red Cedar



**PUL9000**  
Metropolis Black



**PU08**  
Romantic Walnut



**PUL2581**  
New York Grey



**PU30**  
Tropical Ipe



**PUL0500**  
Athens White





# A large choice of natural colors

## **PURA® NFC WOOD DECORS:** HARMONIZING WITH NATURE

Pura® NFC's rich palette of wood decors is inspired by nature to maximize design freedom and a long-lasting, beautiful finish.

## **PURA® NFC LUMEN:** A MODERN APPEARANCE

Pura® NFC Lumen gently diffuses light for a modern or ethereal look. Its low reflection of light gives the façade a smooth matte appearance.

# 3 sizes to cover all your needs

Pura® NFC siding comes in three sizes to offer architects more flexibility to design each façade exactly as they see fit. The larger size can also reduce installation time.

120 x 7.32 inch	5.91 $\text{ft}^2$
(3050 x 186 mm)	0.55 $\text{m}^2$

<b>NEW</b>	
120 x 14.41 inch	11.82 $\text{ft}^2$
(3050 x 366 mm)	1.10 $\text{m}^2$

<b>NEW</b>	
120 x 21.5 inch	17.73 $\text{ft}^2$
(3050 x 546 mm)	1.65 $\text{m}^2$





**PURA® NFC**  
PU30 Tropical Ipe

**PURA® NFC**  
PU17 Aged Ash



**PURA® NFC**  
PU22 Slate Ebony





**PURA<sup>®</sup> NFC**

## Siding collection

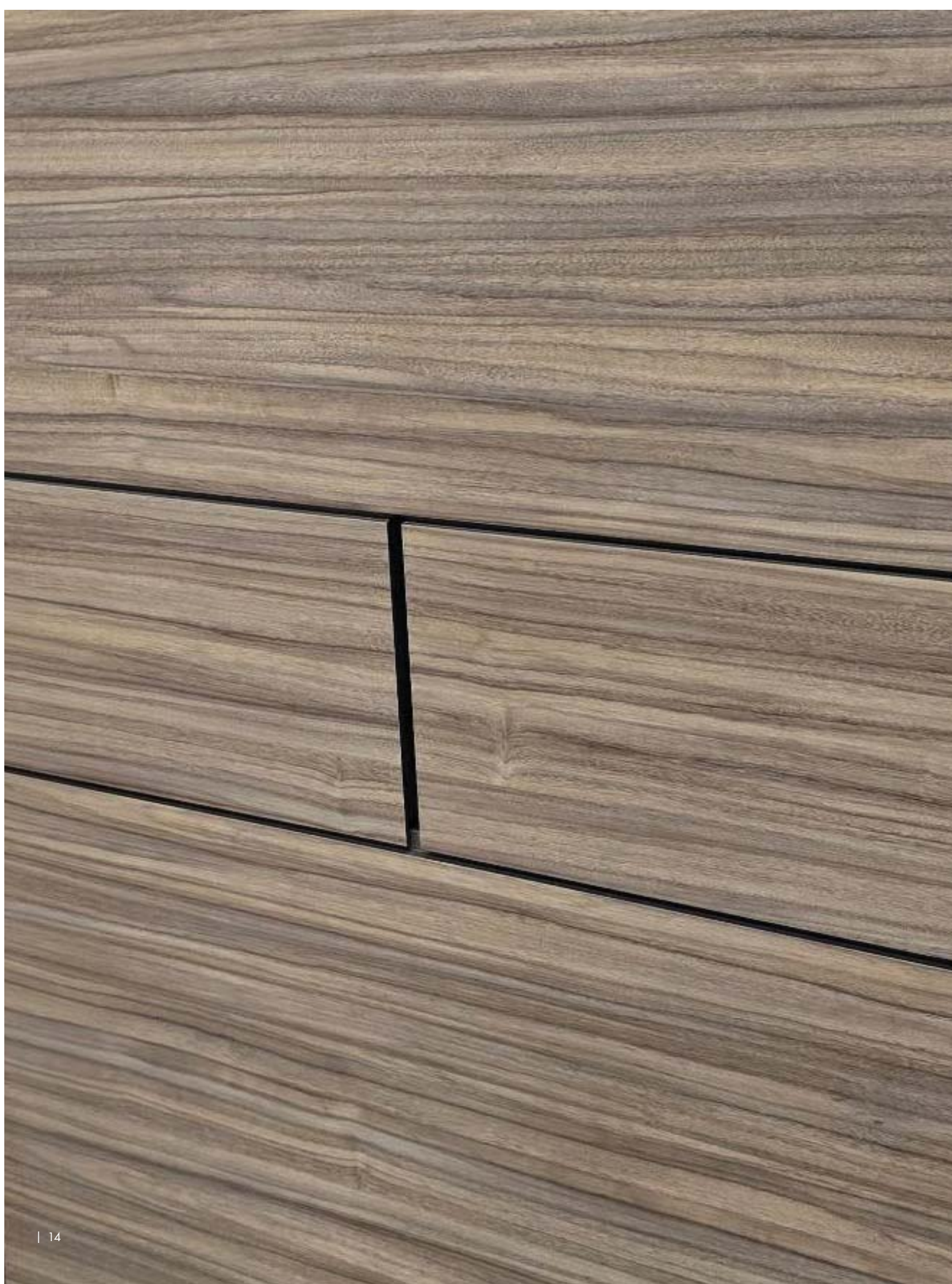
Pura<sup>®</sup> NFC comes with a tailored collection of installation clips, color-matched profiles and fasteners. Every detail can look exactly as it was designed.

The siding comes prefinished, but if they need to be fitted for a dormer or eaves, the strength of Pura<sup>®</sup> NFC means installers can cut without splinters or shattering.

Also, the edges don't need sealing – the durability and hue go all the way through. Corners stay sharp and the surface stays smooth.

**PURA<sup>®</sup> NFC**  
PU24 Mystic Cedar












## Once installed, never redone

Pura® NFC is engineered to be used in a ventilated façade solution that's easily installed. The relatively low weight of the prefinished siding makes it easy to slide into place and its durability means it can handle a rough build site. The combination of durability and ventilation helps Pura® NFC withstand challenging climates.



# Delivery program

WOOD DECORS	COLOR CODE	COLOR NAME	CORE		FINISH
			Brown	Black	Matte
	PU02	Classic Oak	•		•
	PU14	French Walnut	•		•
	PU31	Western Red Cedar	•		•
	PU08	Romantic Walnut	•		•
	PU30	Tropical Ipe	•		•
	PU28	Siberian Larch	•		•
	PU24	Mystic Cedar	•		•
	PU17	Aged Ash	•		•
	PU22	Slate Ebony		•	•

LUMEN	COLOR CODE	COLOR NAME	CORE		FINISH
			Brown	Black	Diffuse
	PUL0500	Athens White		•	•
	PUL2581	New York Grey		•	•
	PUL9000	Metropolis Black		•	•


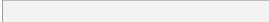
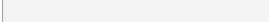


Order samples at  
**TRESPA.COM**

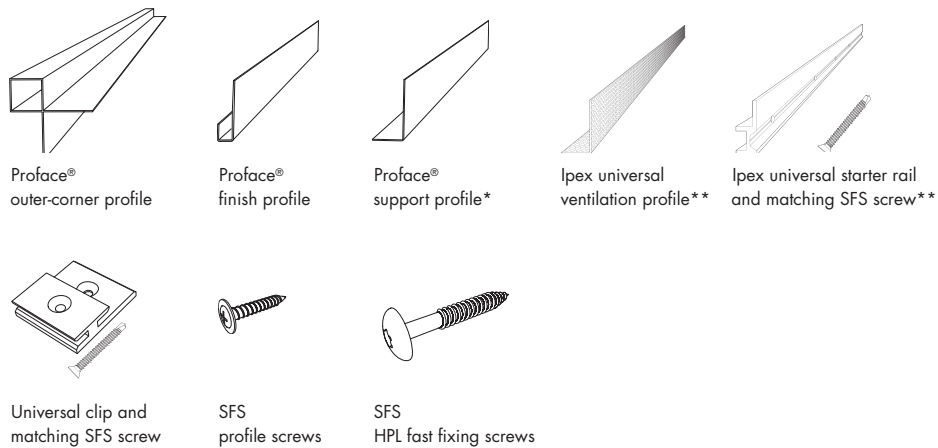




## PREFINISHED SIDING

SIDING	FULL PALLET			
	Size	Surface (gross)	Surface (net)	Quantity
	120.08 x 7.32 x 0.315 in 3050 x 186 x 8 mm	6.11 ft <sup>2</sup> 0.57 m <sup>2</sup>	5.91 ft <sup>2</sup> 0.55 m <sup>2</sup>	144 pcs
<b>NEW</b> 	120.08 x 14.41 x 0.315 in 3050 x 366 x 8 mm	12.02 ft <sup>2</sup> 1.12 m <sup>2</sup>	11.82 ft <sup>2</sup> 1.10 m <sup>2</sup>	48 pcs
<b>NEW</b> 	120.08 x 21.5 x 0.315 in 3050 x 546 x 8 mm	17.93 ft <sup>2</sup> 1.67 m <sup>2</sup>	17.73 ft <sup>2</sup> 1.65 m <sup>2</sup>	48 pcs

## FASTENERS AND MATCHING ACCESSORIES



\*only available in black core, brown core | \*\*only available in black

## PROFILES, HPL SCREWS AND RIVETS ARE AVAILABLE IN THE FOLLOWING COLORS:



For specifics about fixing solutions, please visit our website **TRESPA.INFO**





Trespa® -  
The architects' choice  
for over 60 years





Pura® NFC is designed and created by Trespa, a specialist in paneling and siding headquartered in the Netherlands. Founded in 1960, Trespa is the first choice in exterior paneling for many of the world's leading architects, who insist on quality, reliability and durability for their projects.

**PURA® NFC**  
PU08 Romantic Walnut





# PURA<sup>®</sup> NFC

## TRESPA INTERNATIONAL B.V.

P.O. Box 110, 6000 AC Weert  
Wetering 20, 6002 SM Weert  
The Netherlands  
[www.trespa.com](http://www.trespa.com)

## TRESPA NORTH AMERICA LTD.

10155 Reading Road  
Cincinnati, OH 45241  
United States  
1-800-487-3772  
[Info.NorthAmerica@Trespa.com](mailto:Info.NorthAmerica@Trespa.com)

For more information visit [Trespa.com](http://Trespa.com)

### GENERAL

These terms apply to the use of this document and such use automatically means that the other party agrees to these terms. The information provided by Trespa International B.V. ("Trespa") in this document is solely indicative. Trespa is unable to warrant the accuracy and completeness of this information. Trespa may change the information included in this document at any time and without further notice. Trespa's customers and third parties must ascertain that they have the most recent document (for the most recent version, please consult: [www.trespa.com](http://www.trespa.com)). No rights can be derived from the information provided; the use of the information is at the other party's risk and responsibility. Trespa does not warrant that the information in this document is suitable for the purpose for which it is consulted by the other party. This document does not contain any design, structural calculation, estimate or other warranty or representation that customers and third parties may rely on. This document does not guarantee any properties of Trespa products. Colors used in Trespa's communications (including but not limited to printed matter) and in samples of Trespa's products may differ from the colors of the Trespa products to be supplied. Samples are not intended for use in product tests and are not representative of characteristics of

the Trespa products. Trespa's products and samples are produced within the specified color tolerances and the colors (of production batches) may differ, even if the same color is used. The viewing angle also influences the color perception. Metallics panels feature a surface whose color appears to change based on the direction from which it is viewed. The specified color stability and color specifications relate only to the decorative surface of the Trespa products, not to the core material and samples of the Trespa products. Trespa products are delivered ex-works with straight, sawn sides. Customers and third parties must have a professional adviser inform them about (the suitability of) the Trespa products for all desired applications and about applicable laws and regulations. Trespa does not warrant the above. The most recent version of the current delivery programme and the Material Properties Datasheet can be found at [www.trespa.info](http://www.trespa.info). Only the information in the most recent and valid Material Property Datasheet should be used to select and provide advice regarding Trespa products. Trespa reserves the right to change (the specifications for) its products without prior notice.

### LIABILITY

Trespa is not liable (neither contractual nor non-contractual) for any damage arising from or related to the use of this document, except if and to the extent that such damage is the result of wilful misconduct or gross negligence on the part of Trespa and/or its management. The limitation of liability applies to all parties affiliated with Trespa, including but not limited to its officers, directors, employees, affiliated enterprises, suppliers, distributors, agents, and representatives.

### GENERAL CONDITIONS

All oral and written statements, offers, quotations, sales, supplies, deliveries and/or agreements and all related activities of Trespa are governed by the Trespa General Terms and Conditions of Sale (Algemene verkoopvoorwaarden Trespa International B.V.) filed with the Chamber of Commerce and Industry for Noord- en Midden- Limburg in Venlo (NL) on May 9, 2023 under number 24270677, which can be found on and downloaded from the Trespa website, [www.trespa.com/documentation](http://www.trespa.com/documentation). All oral and written statements, offers, quotations, sales, supplies, deliveries and/or agreements and all related work of Trespa North America, Ltd. are governed by the Trespa North America General Terms and Conditions of Sale, which can be found

on and downloaded from the Trespa website, [www.trespa.com/documentation](http://www.trespa.com/documentation). A copy of these general conditions of sale will be provided free of charge on request. All general terms and conditions other than the conditions mentioned above are dismissed and do not apply, regardless of whether such terms and conditions are referred to on requests for offers, offer confirmations, stationery and/or other documents of the other party, even if Trespa does not expressly object to such terms and conditions.

### INTELLECTUAL PROPERTY

All intellectual property rights and other rights regarding the content of this document (including logos, text and photographs) are owned by Trespa and/or its licensors. Any use of the content of this document, including distribution, reproduction, disclosure, storage in an automated data file or the dispatch of such a file without Trespa's prior written consent is explicitly prohibited. © Trespa, Meteon, Athlon, TopLab, TopLab<sup>PLUS</sup>, TopLab<sup>PLUS</sup>ALIGN, TopLab<sup>ECO</sup>FIBRE, TopLab<sup>VERTICAL</sup>, TopLab<sup>BASE</sup>, Virtuo, Izeon, Pura, Pura NFC, Volkern, Trespa Essentials and Mystic Metallics are registered trademarks of Trespa.

### QUESTIONS

Should you have any questions or comments, please do not hesitate to contact Trespa.



EN-US7103-432960 | Version 1.0  
Brochure code EN-US7103 | Date 04-2025

# TRESPA<sup>®</sup>