

# FINISHES AND COLOR'S ACCELERATED AGING TEST



#### DISCLAIMER - GENERAL NOTES

Due to conversion from metric sizes and measurements, the US values provided are approximate.

The information provided by WoodN Industries in this document are solely indicative, they are based on the present state of knowledge and must be considered only as a description of our products and their possible application. Such information must not be interpreted as a guarantee of specific features, performances or warranties of the product. Material's colors and finishes represented in this document are the result of printing techniques so they may slightly differ from the original colors. Original samples are available upon request and constitute only a general indication of the dimensions and the aesthetic appearance of Woodn™ profiles. WoodN Industries may change the information included in this document at any time and without further notice. WoodN Industries does not warrant the accuracy and completeness of the information in this document and furthermore their suitability for the purpose which it is consulted for by the other parties. WoodN's customers or third parties must ascertain they have the most recent version of this document, available at [www.woodn.com](http://www.woodn.com). It is advised that customers and third parties have a professional adviser to inform them about the suitability of the products for all desired applications and about applicable laws and regulations. WoodN Industries reserves the right to modify products and concerning features without prior notice. WoodN Industries is not liable for any damage arising from, or related to, the use of this document. Woodn™ material does not have structural characteristics and therefore WoodN Industries declines all responsibilities for improper use of the material. No sections of this publication can be reproduced, stored in database, or transmitted in any form or by any other mean without the explicit approval of WoodN Industries. For more information please contact WoodN Industries.

# FINISHES

## outdoor colors

Available only in brushed (all profiles) or dune finish (only Q20410-WA)

01 Bianco Carrara



01-PW Avorio



02 Lagorai



09 Cuba



10 Caffè Bogotà



13 Myanmar



28 Grigio Londra



14 Grigio Silverstone



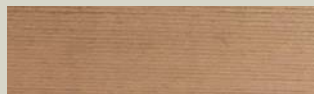
34 Verde Bamboo



48 Black



33 Beige Sahara



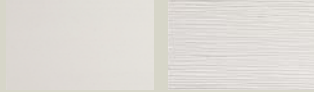
## indoor colors

Available in brushed, smooth (all profiles) or dune finish (only Q20410-WA)

01 Bianco Carrara



01-PW Avorio



02 Lagorai



09 Cuba



10 Caffè Bogota



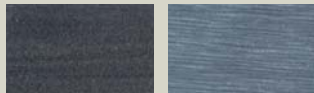
13 Myanmar



28 Grigio Londra



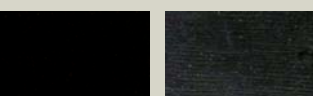
14 Grigio Silverstone



34 Verde Bamboo



48 Black



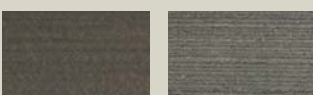
06 Marrakech



33 Beige Sahara



18 Lanzarote



12 Segovia



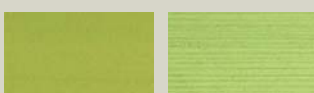
16 Rosso Maranello



26 Azzurro Lido



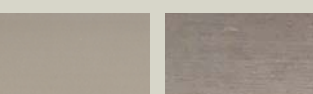
22 Verde Toscano



23 Arancio Siciliano



27 Grigio Lavaredo



Colors and textures shown are purely indicative. Check every time a real sample for approval.  
Considering the presence of natural wood fibers, colors may vary from batch to batch.

# ACCELERATED AGING RESISTANCE TEST

## COLOUR STABILITY

Colour stability has been tested in compliance with accelerated weathering tests (UNI EN ISO 4892-2:2009 and UNI EN ISO 2105-A02:1996); the result of the test is expressed by assigning a numerical value to colour variation according to the international greyscale, which is a useful method to measure colors differences.

## PURPOSE OF THE TEST

Resistance to accelerated aging on Woodn profiles according to UNI norms EN ISO 4892-2:2009 and EN 20105-A02:1996.

## TEST METHOD

The equipment used is fitted with a 6500 watt water-cooled Xenon lamp.

The equipment is set according to the following parameters:

- exposure to continuous light
- light source on the samples: 0.50 W/m<sup>2</sup> (0.05 W/sqft) at 340 nm, corresponding to 580 W/m<sup>2</sup> (53.9 W/sqft)
- total power exposed to the sample: 2.50 GJ/m<sup>2</sup> (0.23 GJ/sqft) and 7.5 GJ/m<sup>2</sup> (0.7 GJ/sqft)
- exposure program: 102 min. of light exposure and 18 min. of light exposure + sprayed deionized water.

sample	color	Greyscale degree* after 3600h of exposure against original samples	Greyscale degree** after 3600h of exposure compared to samples aged for 1200 h
1	Carrara White**	3	4/5
2	Lagorai**	3	4/5
5	Marostica	3/4	4/5
6	Marrakech	3/4	4/5
9	Cuba**	3/4	4/5
10	Bogota Coffee**	4	4
12	Segovia	3	4/5
13	Myanmar**	4	4
14	Silverstone Grey**	4	4/5
15	Mediterraneo Light Blue	2/3	4/5
16	Maranello Red	2/3	4/5
18	Lanzarote	3/4	4/5
26	Lido Light Blue	3	4/5
27	Lavaredo Grey	2/3	4/5
28	London Grey**	3	4/5
33	Sahara Beige	3/4	5
34	Bamboo Green**	3/4	4/5

(\*) The international greyscale goes from Grade 1 (maximum colour difference) to Grade 5 (minimum colour difference).

(\*\*) Colour recommended for outdoor applications.

Hereunder are the photos of samples used for the test.

sample	color	Original color	Aged color (1200 hours)	Aged color (3600 hours)
2	Lagorai			
9	Cuba			
14	Silverstone Grey			

The above photos are an approximate indication of the change in the shade of colour of the product after being exposed to atmospheric agents. Effective ageing of the product depends on its exposure to atmospheric agents, which, in turn, depends on multiple factors (for example, the geographic position and orientation of the application). Woodn Industries shall not be held responsible for any difference between the actual ageing and what is reported above.



**Headquarter:**

Woodn Industries, Via Ippolito Caffi, 17 - 32100 Belluno, ITALY  
tel: +39 049 89.60.706  
info@woodn.com

**Production site:**

Woodn Italy, Via delle Industrie, 11 - 30030 Salzano (VE), ITALY

[www.woodn.com](http://www.woodn.com)