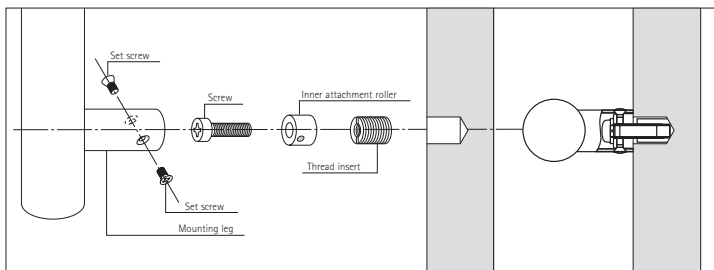
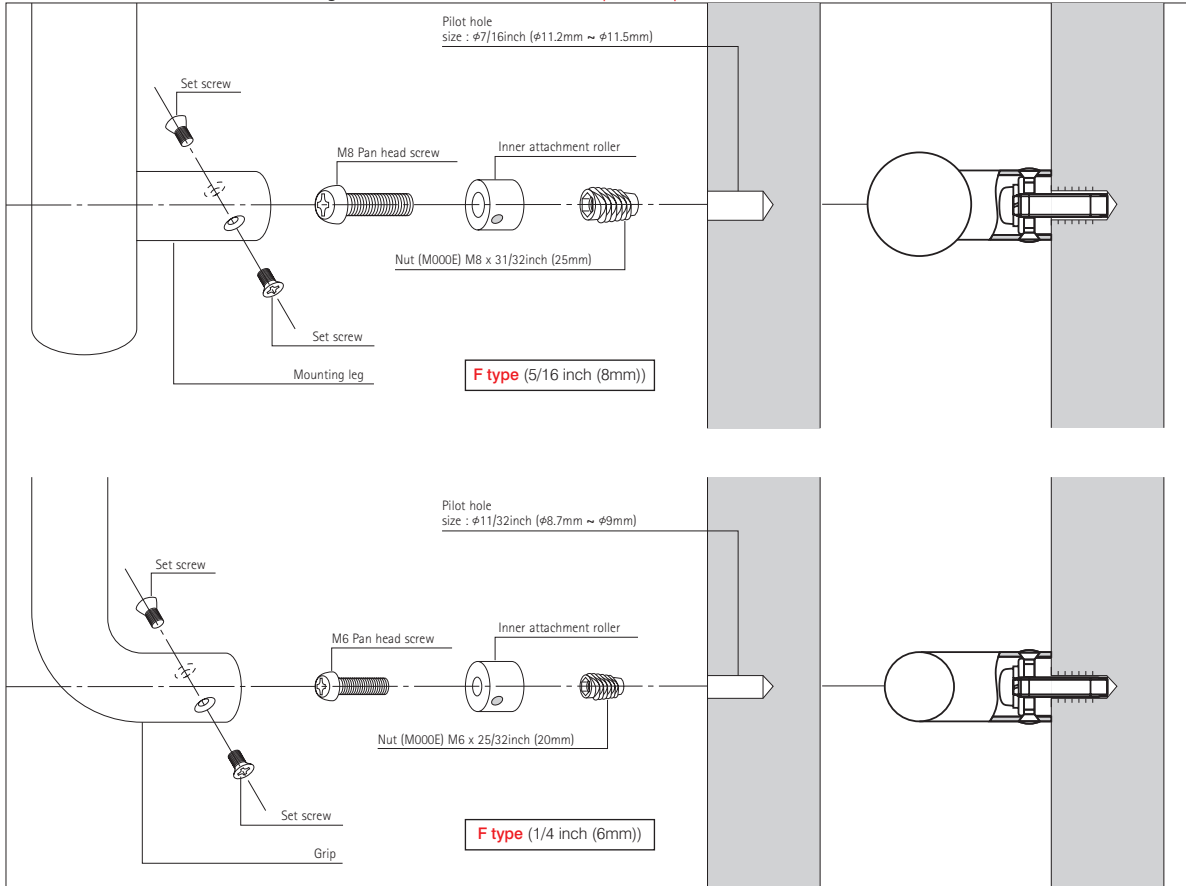
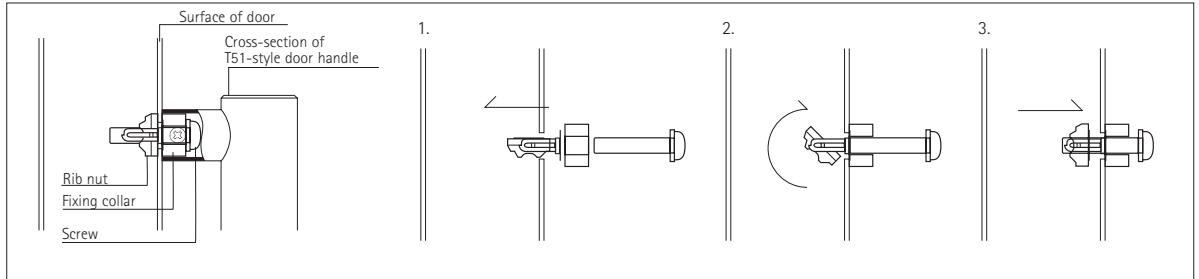


□ Thread insert for concealed fixing hardware on wood door **Optional parts**

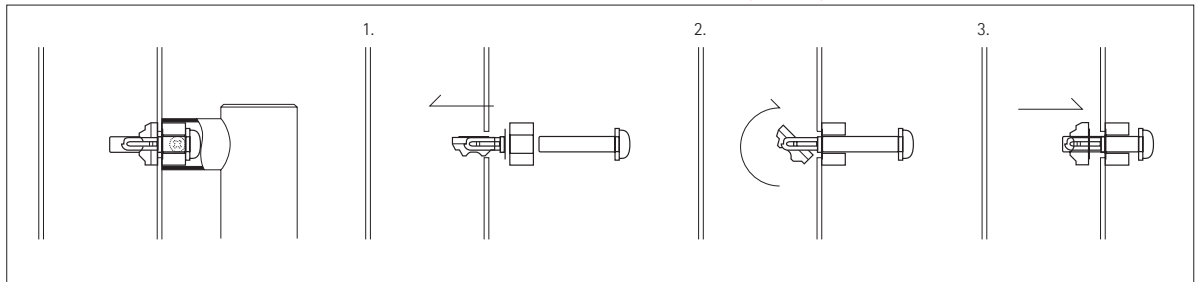


☐ Installations for concealed mounting on hollow metal doors (M8 : rib nut) **Optional parts**



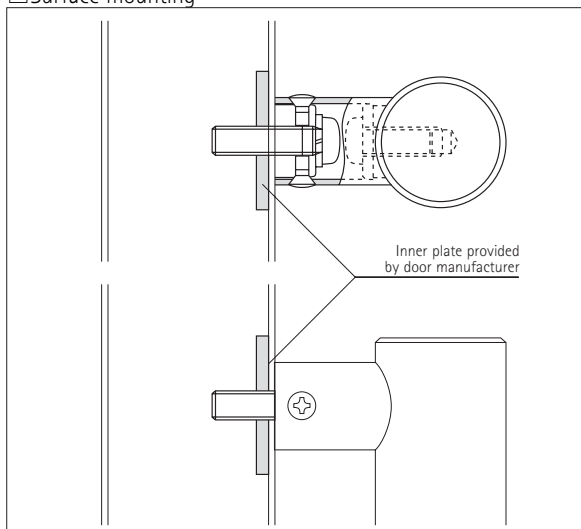
- ① Drill 1/2inch hole through the door surface. Set the rib nut in the hole. Insert the screw into the fixing collar. Then, gradually tighten the rib nut and the fixing collar.
- ② The rib nut turns simultaneously with the screw.
- ③ As the screw is tightened, the rib nut moves closer to the face of the door.

☐ Installations for concealed mounting on hollow metal doors (M6 : rib nut) **Optional parts**



- ① Drill 1/2inch hole through the door surface. Set the rib nut in the hole. Insert the screw into the fixing collar. Then, gradually tighten the rib nut and the fixing collar.
- ② The rib nut turns simultaneously with the screw.
- ③ As the screw is tightened, the rib nut moves closer to the face of the door.

☐ Surface mounting



- Concealed mounting for hollow steel or aluminum door utilizing fitted reinforcement inner plate.
- Thickness of inner plate welded to inside of door : 1/7inch or more.
- In this case, interior side of handle is used. Normally, M6 or M8 screws are used, so metric tapping of 1/4 inch (6mm) or 5/16 inch (8mm) diameter is necessary.
- In case you can make metric tapping, we can supply the necessary metric screws. However, if you are unable to make metric tapping, you can use the following screws:
 Instead of M6 1/4" · 20 threads per inch x1" or 11/2" long
 Instead of M8 5/16" · 18 threads per inch x1" or 11/2" long