



COMMERCIAL AND ARCHITECTURAL
DOOR MANUFACTURER

OPENINGS TO THE WORLD

Wood Jamb Series

Limited Warranty for wood jambs

1. LAMBTON DOORS warrants for the lifetime all jambs sold under this warranty except those expressly excluded from this warranty. This coverage is in effect from the date of shipment and applicable on initial installation only, and is for the sole benefit of the original purchaser to be of good material and workmanship and to be free of defects which would render said jambs unserviceable or unfit for their ordinary recommended use.
2. THIS WARRANTY APPLIES TO ORIGINAL PURCHASERS OF THE DESCRIBED JAMBS. IT MAY ALSO EXTEND TO RESALE/ SUPPLY OF THE PRODUCT TO THE END-USER/OWNER AT THE POINT OF ORIGINAL INSTALLATION. IF REQUIRED, CLAIMS MUST BE PROCESSED SOLELY THROUGH THE INITIAL SUPPLIER. ANY IMPLIED WARRANTIES WHICH THE PURCHASER MAY HAVE ARE LIMITED TO THE TERMS, DURATION AND CONDITIONS OF THIS WARRANTY. THIS WARRANTY IS EFFECTIVE FROM THE DATE OF SHIPMENT OR SUBSTANTIAL COMPLETION AS REQUIRED.
3. LAMBTON DOORS will, at its option, either (1) repair any product without charge or (2) replace any product without charge in whatever stage of fitting or finishing as it was originally supplied, or (3) refund the price received by LAMBTON DOORS for any product. IF A JAMB IS FOUND DEFECTIVE, WRITTEN NOTICE OF ANY CLAIM UNDER THIS WARRANTY MUST BE GIVEN TO LAMBTON DOORS IMMEDIATELY, INCLUDING DIGITAL PICTURES. In the case of a defect reasonably discoverable by inspection of each product upon receipt of shipment, notice must be given to LAMBTON DOORS within thirty (30) days thereafter shipping and before the product is installed or treated in any matter.
4. LAMBTON DOORS shall not be liable for jambs repaired or replaced without its prior written consent.
5. LAMBTON DOORS is not obligated to pay for removal and re-hanging if the defect for which the jamb is being rejected was apparent prior to installation.
6. In any of the above cases, LAMBTON DOORS will not accept any "back charge" due to re-hanging or re-finishing.
7. Action on any claim for warp or telegraphing may be deferred, at the option of the manufacturer, for a period not to exceed twelve (12) months from the date of claim. If a jamb has been installed prior to such claim being made, the jamb must remain hung in the original installation, during the period of deferment, to permit conditioning to humidity and temperature.
8. LAMBTON DOORS cannot be responsible for any casing or mill-work attached to such jambs (supplied by others).
9. Warranty will be honoured only if the jambs have been installed in accordance to the Installation instructions supplied.

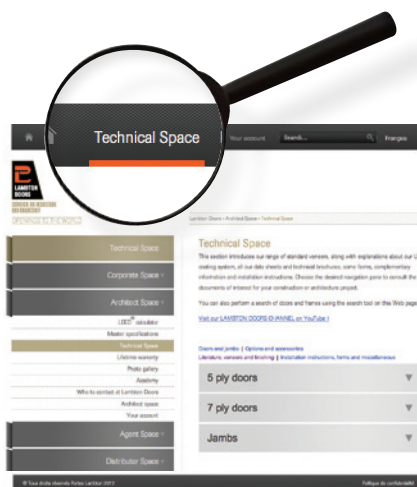
V02 09/2013

This document is also available on our Website www.lambtondoors.com at **Architect Space** under Lifetime warranty.

Consult and download our technical sheets.

Consult and download all of our literature and technical sheets from the **Technical Space** of our Website.

www.lambtondoors.com





COMMERCIAL AND ARCHITECTURAL
DOOR MANUFACTURER

OPENINGS TO THE WORLD

APPLICABLE SPECIFICATIONS

to all of our Wood Jamb Series

Assembly

Dado's pre-drilled and countersunk for #8 wood screw.
Screws supplied by others.

Rabbet assembly. Miter assembly (45°) also available.

Shipping

Knock down.

Wrapping

Bundle wrapped.

Notes

Dimensions on drawing are finished sizes.
Refer to *Technical Space* of our Website for Installation instructions.
UF Free.
Available FSC Certified.

Warranty

Life of original installation. See our complete warranty for details.

Factory finish

UV Finishing System. Stain, clearcoat, opaque and primed finish available.
Custom color matching available. No VOC.

Environmental description

Low Emitting Materials (LEED® EQc4.1, EQc4.2, EQc4.4).
FSC Certified wood, available on request (LEED® MRc7).

Suggested rough opening dimensions

For single or pair doors

After finished floor:

Width: Interior opening of the frame + 2-3/4" (70 mm)

Height: Interior opening of the frame + 1-3/8" (35 mm)

Ex.: For a 36" x 84" interior opening (914 mm x 2 134 mm),
rough opening should be:
width: 36" + 2-3/4" = 38-3/4" (984 mm)
height: 84" + 1-3/8" = 85-3/8" (2 169 mm).

Opening dimensions for the following jambs:

CFJ-60: Width 3-3/4" (95 mm) and height 1-7/8" (48 mm)
36" x 84" interior opening: width 39-3/4" (1 010 mm) and height 85-7/8" (2 181 mm)

CFRJ-60: Width 3-3/4" (95 mm) and height 1-7/8" (48 mm)
36" x 84" interior opening: width 39-3/4" (1 010 mm) and height 85-7/8" (2 181 mm)

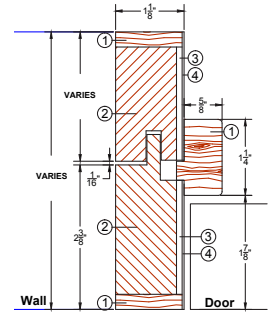
CFJ-00: Width 3-1/2" (89 mm) and height 1-3/4" (44 mm)
36" x 84" interior opening: width 39-1/2" (1 003 mm) and height 85-3/4" (2 178 mm)

SJC-00: Width 2-1/4" (57 mm) and height 1-1/8" (29 mm)
36" x 84" interior opening: width 38-1/4" (972 mm) and height 85-1/8" (2 162 mm)

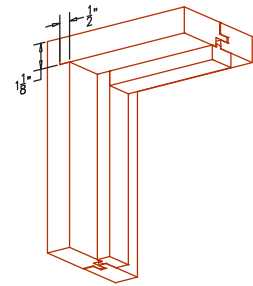
Split Jamb

SJ-00

Non-rated



- 1- Wood
- 2- Structural Composite Lumber (SCL)
- 3- Crossband
- 4- Veneer



Specifications

Wall thickness

Minimum 3-5/8" (92 mm)
+ 1/4" (6 mm) adjustment

Wood casing

Standard profiles available.

Conforms to

N/A

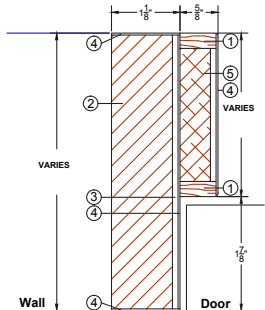
Maximum opening

Single: 48" x 120"
(1 219 mm x 3 048 mm)
Pair: 96" x 120"
(2 438 mm x 3 048 mm)

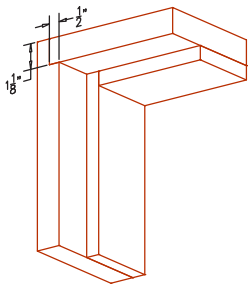
Rabbet Jamb

RJ-00

Non-rated



- 1- Wood
- 2- Structural Composite Lumber (SCL)
- 3- Crossband
- 4- Veneer
- 5- Medium Density Fiberboard (MDF)



Specifications

Wall thickness

Minimum 3-5/8" (92 mm)

Wood casing

Standard profiles available.

Conforms to

N/A

Maximum opening

Single: 48" x 120"

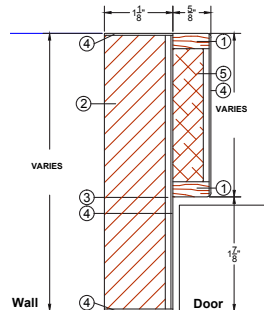
(1 219 mm x 3 048 mm)

Pair: 96" x 120"

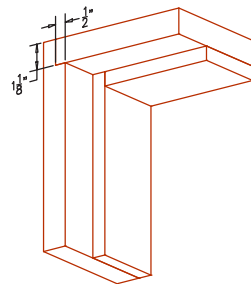
(2 438 mm x 3 048 mm)

RJ-20

20 minute



- 1- Wood
- 2- Structural Composite Lumber (SCL)
- 3- Crossband
- 4- Veneer
- 5- Medium Density Fiberboard (MDF)



Specifications

Wall thickness

Minimum 3-3/4" (95 mm)

Rated wall as per code requirements

Wood casing

Standard profiles available.
Minimum 5/16" x 1-5/8"
(8 mm x 41 mm)

Conforms to

Conforms with Positive and Neutral Pressure firedoors.

Maximum opening

Single: 48" x 108"

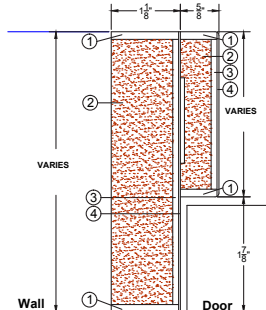
(1 219 mm x 2 743 mm)

Pair: 96" x 108"

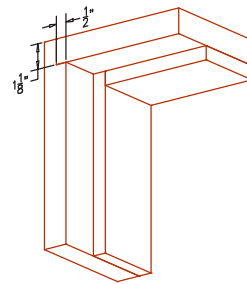
(2 438 mm x 2 743 mm)

RJ-45/60

45 and 60 minute



- 1- Wood
- 2- Fire Proof Composite Material (FPCM)
- 3- Crossband
- 4- Veneer



Specifications

Wall thickness

Minimum 5" (127 mm)

Rated wall as per code requirements

Wood casing

Standard profiles available.
Minimum 5/16" x 1-5/8"
(8 mm x 41 mm)

Conforms to

Conforms with Category A and B Positive and Neutral Pressure firedoors.

Maximum opening

Single: 48" x 108"

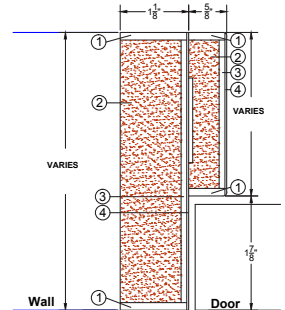
(1 219 mm x 2 743 mm)

Pair: 96" x 108"

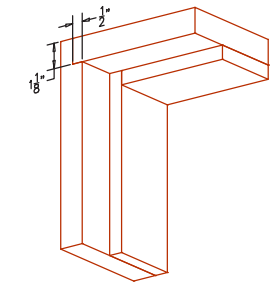
(2 438 mm x 2 743 mm)

RJ-90

90 minute



- 1- Wood
- 2- Fire Proof Composite Material (FPCM)
- 3- Crossband
- 4- Veneer



Specifications

Wall thickness

Minimum 5" (127 mm)

Rated wall as per code requirements

Wood casing

Standard profiles available.
Minimum 5/16" x 1-5/8"
(8 mm x 41 mm)

Conforms to

Conforms with Category A and B Positive and Neutral Pressure firedoors.

Maximum opening

Single: 48" x 96"

(1 219 mm x 2 438 mm)

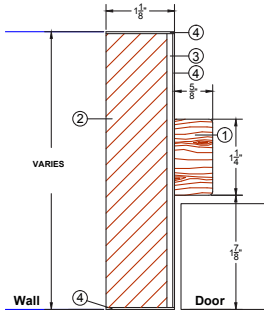
Pair: 96" x 96"

(2 438 mm x 2 438 mm)

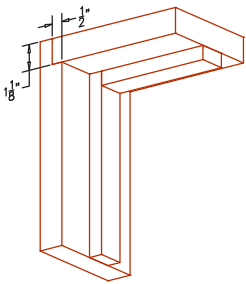
“T” Jamb

TJ-00

Non-rated



- 1- Wood
- 2- Structural Composite Lumber (SCL)
- 3- Crossband
- 4- Veneer



Specifications

Wall thickness

Minimum 3-5/8" (92 mm)

Wood casing

Standard profiles available.

Conforms to

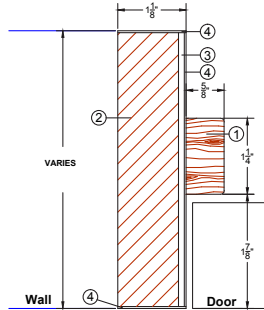
N/A

Maximum opening

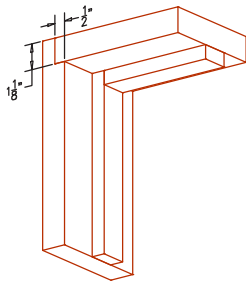
Single: 48" x 120"
(1 219 mm x 3 048 mm)
Pair: 96" x 120"
(2 438 mm x 3 048 mm)

TJ-20

20 minute



- 1- Wood
- 2- Structural Composite Lumber (SCL)
- 3- Crossband
- 4- Veneer



Specifications

Wall thickness

Minimum 3-3/4" (95 mm)
Rated wall as per
code requirements

Wood casing

Standard profiles available.
Minimum 5/16" x 1-5/8"
(8 mm x 41 mm)

Conforms to

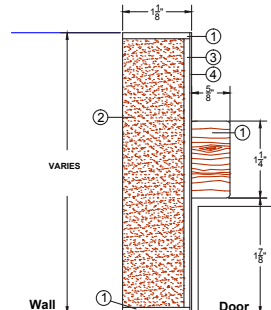
Conforms with Positive and
Neutral Pressure firedoors.

Maximum opening

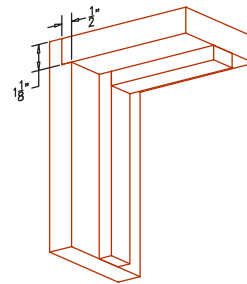
Single: 48" x 108"
(1 219 mm x 2 743 mm)
Pair: 96" x 108"
(2 438 mm x 2 743 mm)

TJ-45/60

45 and 60 minute



- 1- Wood
- 2- Fire Proof Composite Material (FPCM)
- 3- Crossband
- 4- Veneer



Specifications

Wall thickness

Minimum 5" (127 mm)
Rated wall as per
code requirements

Wood casing

Standard profiles available.
Minimum 5/16" x 1-5/8"
(8 mm x 41 mm)

Conforms to

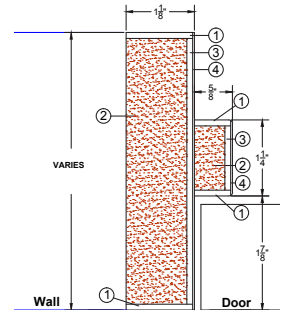
Conforms with Category A and B
Positive and Neutral Pressure
firedoors.

Maximum opening

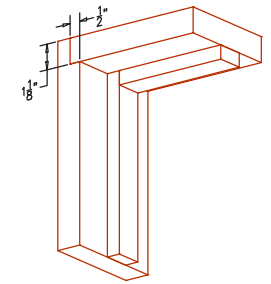
Single: 48" x 108"
(1 219 mm x 2 743 mm)
Pair: 96" x 108"
(2 438 mm x 2 743 mm)

TJ-90

90 minute



- 1- Wood
- 2- Fire Proof Composite Material (FPCM)
- 3- Crossband
- 4- Veneer



Specifications

Wall thickness

Minimum 5" (127 mm)
Rated wall as per
code requirements

Wood casing

Standard profiles available.
Minimum 5/16" x 1-5/8"
(8 mm x 41 mm)

Conforms to

Conforms with Category A and B
Positive and Neutral Pressure
firedoors.

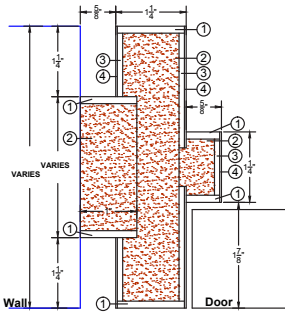
Maximum opening

Single: 48" x 96"
(1 219 mm x 2 438 mm)
Pair: 96" x 96"
(2 438 mm x 2 438 mm)

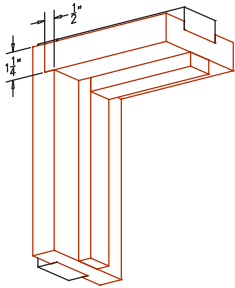
Casing Free Jamb

CFJ-60

60 minute



- 1- Wood
- 2- Fire Proof Composite Material (FPCM)
- 3- Crossband
- 4- Veneer



Specifications

Wall thickness

Minimum 5" (127 mm)

Wood casing

No wood casing required at installation with this jamb.

Conforms to

N/A

Maximum opening

Single: 48" x 96"

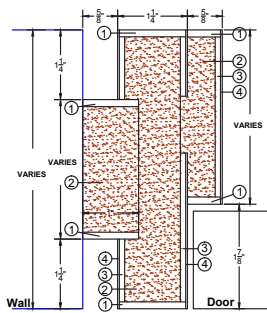
(1 219 mm x 2 438 mm)

Pair: 96" x 96"

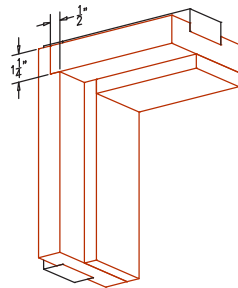
(2 438 mm x 2 438 mm)

CFRJ-60

60 minute



- 1- Wood
- 2- Fire Proof Composite Material (FPCM)
- 3- Crossband
- 4- Veneer



Specifications

Wall thickness

Minimum 5" (127 mm)

Wood casing

No wood casing required at installation with this jamb.

Conforms to

N/A

Maximum opening

Single: 48" x 96"

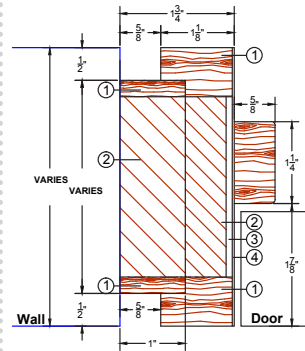
(1 219 mm x 2 438 mm)

Pair: 96" x 96"

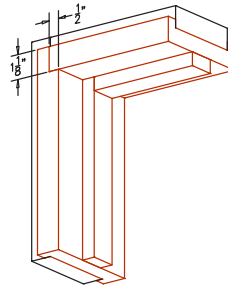
(2 438 mm x 2 438 mm)

CFJ-00

Non-rated



- 1- Wood
- 2- Structural Composite Lumber (SCL)
- 3- Crossband
- 4- Veneer



Specifications

Wall thickness

Minimum 3-5/8" (92 mm)

Wood casing

No wood casing required at installation with this jamb.

Conforms to

N/A

Maximum opening

Single: 48" x 120"

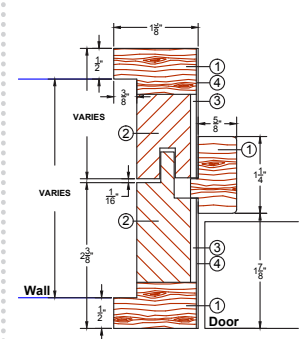
(1 219 mm x 3 048 mm)

Pair: 96" x 120"

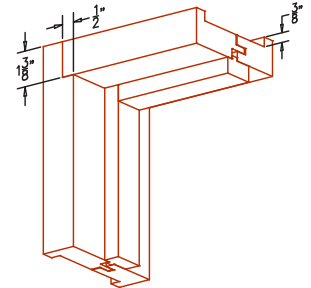
(2 438 mm x 3 048 mm)

SJC-00

Non-rated



- 1- Wood
- 2- Structural Composite Lumber (SCL)
- 3- Crossband
- 4- Veneer



Specifications

Wall thickness

Minimum 3-5/8" (92 mm)
+ 1/4" (6 mm) adjustment

Wood casing

No wood casing required at installation with this jamb.

Conforms to

N/A

Maximum opening

Single: 48" x 120"

(1 219 mm x 3 048 mm)

Pair: 96" x 120"

(2 438 mm x 3 048 mm)

Oversized Jamb and Door Solutions

LAMBTON DOORS
offers complete solutions for
oversized jams and doors.
Feel free to contact our Customer
Service to discuss your project.



Why Choose our Wood Jamb Series?

UF Free and available FSC Certified.

Superior strength and durability over solid wood.

Perfect veneer match between door and jamb.

Available in all veneer species and color finishes,
we offer custom color development.

Available non-rated and rated, neutral and positive pressure up to 90 minute.

Complete machining available for easy hardware installation.

Complete Installation instructions supplied for quick and easy jobsite efficiency.

Sidelight Solutions

LAMBTON DOORS offers jamb and door
solutions with sidelight.

Please contact our Customer Service today
for information.



Project Ideas for Jamb?

Any original idea or special design
to develop?

Feel free to contact us and we'll do all that
is necessary to complete your project.



COMMERCIAL AND ARCHITECTURAL
DOOR MANUFACTURER

OPENINGS TO THE WORLD

The mission of Lambton Doors is to develop, manufacture and sell high quality and value added interior wood doors and frames, of standard and ecological types, for the commercial, architectural and institutional markets.

These doors and frames meet the various North American building codes, as well as environmental codes when applicable, while respecting the customers' requirements.

Customer Service

Telephone

418 486.7401

1 800 463.3124 (CAN)

1 800 363.2248 (USA)

Fax

418 486.7381

1 800 561.7443 (CAN/USA)

Web

www.lambtondoors.com

info@lambtondoors.com

Architects and Designers

You can also directly reach us at

architect.designer@lambtondoors.com

Mail

235, 2nd Avenue, Lambton

(Quebec) G0M 1H0 Canada



Corporate Member
Door and Hardware Institute



Active member
of the planetary
ecological movement



We believe in
a transformed
built environment
contributing to
a sustainable future.



The mark of
responsible forestry

We believe in
Good Forestry
Stewardship
Practices.

The FSC® logo identifies products which contain wood from well-managed forests certified in accordance with the rules of the Forest Stewardship Council® A.C.